



**Eagle Bond Chemical Capsule and Bolt** is composed of high-strength anchor bolt, complete with nut and washer, and chemical compositions of vinyl resins, selected quartz sands and curing agents stored inside a glass capsule for stronger and easier application. It is a very effective fastening solution, that eliminates the risk of stress on concrete and breaking of concrete like mechanical anchor bolts produced when fastening.

### Advantages and Benefits

- ✓ Fast Curing Time - Easy to use
- ✓ High Strength Load Capacity
- ✓ Efficient - No Mixing needed, 1pc Chemical Bolt Set per Fixings
- ✓ Easy to use for overhead fixing
- ✓ No stress on concrete compared to mechanical bolts



Temperature	-5°C	5°C	5°C - 10°C	10°C - 20°C	20°C - 30°C	>30°C
Curing Time	360mins	300mins	60mins	45mins	20mins	15mins

## Technical Specifications

Diameter		M8	M10	M12	M16	M20	M24	M30
Capsule (length)	mm	95	100	100	100	170	210	220
Grade 4.8 Galvanized Bolt (length)	mm	110	130	160	190	260	300	390
Safety Load / Haul Strength	KN	5.3	8.3	13.2	19.8	36.9	39.5	46.3
Designed - Tensile / Pull-Out Strength	KN	10.2	14.5	20.8	32.0	54.6	80.2	108.0
Ultimate strength / Destruction / C30	KN	27.6	34.5	43.7	87.4	132.7	190.1	231.2



**7 TIGER METAL WORKS**  
www.7TMW.com

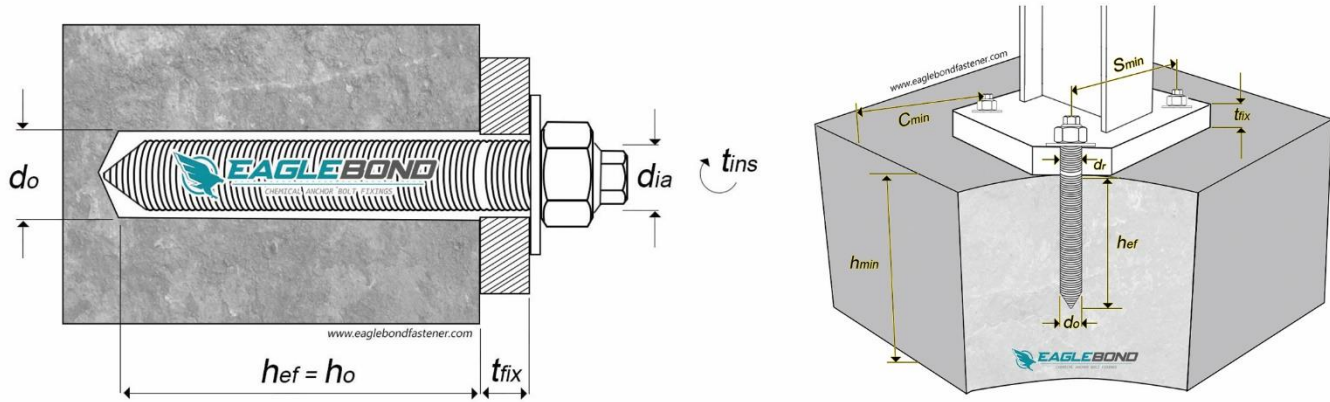
Globe: (0966)-200-2764  
Globe: (0915)-922-7349  
Smart: (0961)-109-0381  
Smart: (0939)-100-9645  
Sales: (02) 8775-3951

facebook.com/7TMWinc

info@7tmw.com

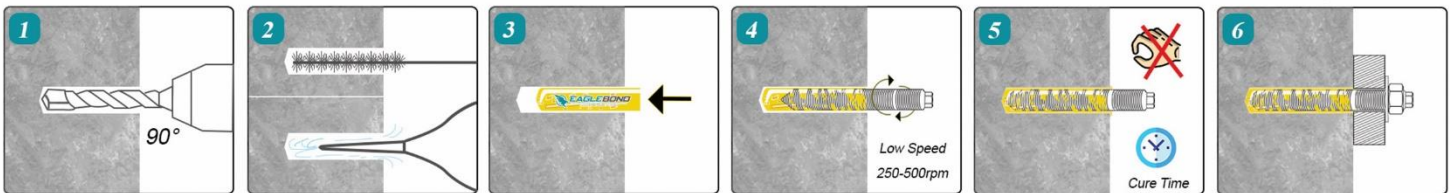


## Settings Guide



Diameter	dia		M8	M10	M12	M16	M20	M24	M30
Hole Diameter	do	mm	10	12	14	18	24	28	35
Anchoring Depth	hef = ho	mm	70	85	100	110	165	195	280
Torque	Tins	Nm	10	20	40	80	120	180	300
Fixture Hole Diameter	dr	mm	9	12	14	18	22	26	33
Fixture Max Thickness	tfix	mm	20	25	30	40	50	65	70
Minimum Thickness of Concrete	hmin	mm	130	140	160	175	220	260	330
Minimum Spacing for bolt	Smin	mm	40	45	55	65	85	105	140
Minimum Edge Distance	Cmin	mm	40	45	55	65	85	105	140

## Installation Guide



**1** Drill the hole based on the correct diameter and anchor depth stated on the technical data sheet.

**2** Make sure to clean the hole before installation, to prevent affecting the strength of bond.

Use steel brush and air pump to clean debris, repeat cleaning process atleast 4 to 5 times.

**3** Insert the capsule in the 90° hole and make sure that it runs smoothly when inserted to prevent breakage.

**4** Drill the stud anchor through the hole at low speed setting. To prevent over flowing of chemical content adhesive.

When the stud reaches the bottom of the hole, stop the drilling immediately.

**5** Avoid moving the bolt or applying load during curing time.

**6** Load installation: please check the technical data sheet provided for the strength reference and torque settings.



### 7 TIGER METAL WORKS

www.7TMW.com

Globe: (0966)-200-2764  
 Globe: (0915)-922-7349  
 Smart: (0961)-109-0381  
 Smart: (0939)-100-9645  
 Sales: (02) 8775-3951

facebook.com/7TMWinc

info@7tmw.com